



**NORTHPOINT**  
CHRISTIAN SCHOOL

# **New Family Handbook**

**Northpoint Christian School**

7400 Getwell Road  
Southaven, MS 38672  
662.349.3096  
[www.ncstrojans.com](http://www.ncstrojans.com)

## ***Welcome to Northpoint Christian School!***

We're glad you made the decision to enroll your student at our school. Our prayer for you is that your child is nurtured and encouraged to do his or her very best, and that your experience as a family at Northpoint Christian School is a positive one that draws you closer to God. Our mission is to be Christ-centered and Biblically-based.

We know that as a new family, you may have questions about the school. Our goal in this handbook is to answer as many of these questions as we can. It's not unusual to feel a little lost when placed in a new environment, but we'd like to ensure that you and your student feel at home at Northpoint Christian School as quickly as possible. It is likely that you aren't even sure yet what questions to ask. We've talked to new families from previous years, and used those conversations to compile basic information that will hopefully ease your transition into life at Northpoint Christian School.

One of the best ways to become involved in the school, learn how it works, and be on top of the latest and most important information is to be involved in the ***Parent Teacher Student Fellowship***. The ***Parent Teacher Student Fellowship*** (PTSF) is all about building up our students, supporting our teachers, and strengthening families. PTSF members truly are "people making a difference." While all Northpoint Christian School families are automatically a member of PTSF, becoming involved can certainly enhance your experience at Northpoint Christian School and help to build new friendships with other Northpoint Christian School families.

It is the parental involvement that makes a good school a great school, so we thank all of those that have supported our program in the past and welcome those of you who are new to join our ranks. The PTSF program experienced a terrific year last year thanks to so many involved parents. PTSF coordinates ongoing school fund raising efforts like Kroger Plus Cards, recycling opportunities, and partner programs such as *Box Tops for Education*. These efforts have raised thousands of dollars that have been used to improve our school. In addition, PTSF also sponsors teacher appreciation days, and teacher appreciation week.

There are so many ways you can get involved, and we can't possibly list them all. Whether you have a little time or a lot of time, we can have a place just for you! Be sure to check out the PTSF information on the home page at [www.ncstrojans.com](http://www.ncstrojans.com) to see what's going on and how you can get involved. Your ideas and a helping hand are always welcomed. Thank you in advance for supporting the Northpoint Christian School PTSF!

If you have questions about anything not listed in this handbook, please refer to either the Elementary Student Handbook or High School Student Handbook that can be found online at [www.ncstrojans.com](http://www.ncstrojans.com). These handbooks are useful resources for most every question. The school's website, [www.ncstrojans.com](http://www.ncstrojans.com) also has specific information for families and students and is updated regularly. If, however, you cannot find the answer to a particular question, please do not hesitate to call the elementary or high school office. We will do our best to an acceptable answer for you.

Again, welcome to Northpoint Christian School and the beginning of what we hope is a fabulous school experience.

Sincerely,  
*The Staff at Northpoint Christian School and PTSF*

## Mission

As a Christ-centered college preparatory school, Northpoint Christian School enables our students to:

- know and honor Jesus Christ
- grow in knowledge and wisdom
- reach their God given potential

## Core Values

- ♦ **Christ-Centered**  
Colossians 1:18
- ♦ **Fear of the Lord**  
Proverbs 9:10
- ♦ **Integrity**  
Psalm 15:1-2
- ♦ **Loving & Caring Attitude**  
John 13:34-35
- ♦ **Respect for Authority**  
Hebrews 13:17
- ♦ **Pursuit of Excellence**  
Colossians 3:23

## Vision

Northpoint Christian School will be a leader in distinctive Christian education by providing an excellent educational environment that honors Christ, nurtures people, and instills within our students a Biblical worldview, a love for learning, and a heart to know God and fulfill His plan for their life.

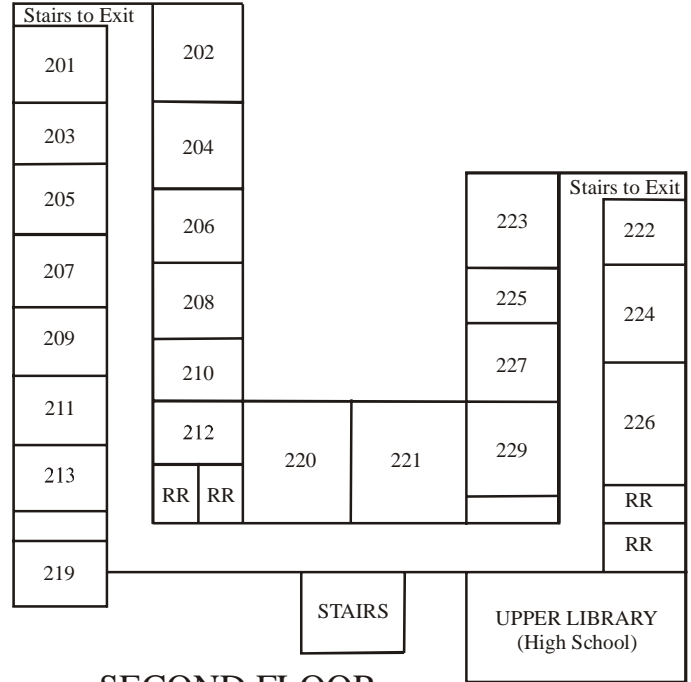
- ♦ **Proverbs 29:18**  
Where there is no vision the people perish.
- ♦ **Habakkuk 2:2-3**  
And the Lord answered me and said, write the vision, and make it plain upon the tablets, that he may run that readeth it. For the vision is yet for an appointed time... though it may tarry...it will surely come.
- ♦ **II Corinthians 4:18**  
For we fix our eyes not on what is seen, but what is unseen. For what is seen is temporary, but what is unseen is eternal.

## Philosophy

- ♦ We believe that Northpoint Christian School is an extension of the ministry of the church and cooperates with the home to educate the student.
- ♦ We believe that God is the source of all Truth, and true education must be based on His revealed Word.
- ♦ We believe that the integration of God's Word into all that we teach is essential to the spiritual, mental, physical, and social development of our students.
- ♦ We believe in a structured curriculum that has been filtered through the Word of God.
- ♦ We believe that the curriculum should provide opportunity for each student, as a special creation of God, to be educated as an individual with his unique abilities, personality, and potential.
- ♦ We believe, testify, and demonstrate in our own lives, the reality of a personal encounter and walk with Jesus Christ as presented in God's Word.
- ♦ We believe our purpose is to develop in students the "mind of Christ" (Philippians 2:5) so that God's Truth becomes an inseparable part of their lives and thinking processes.

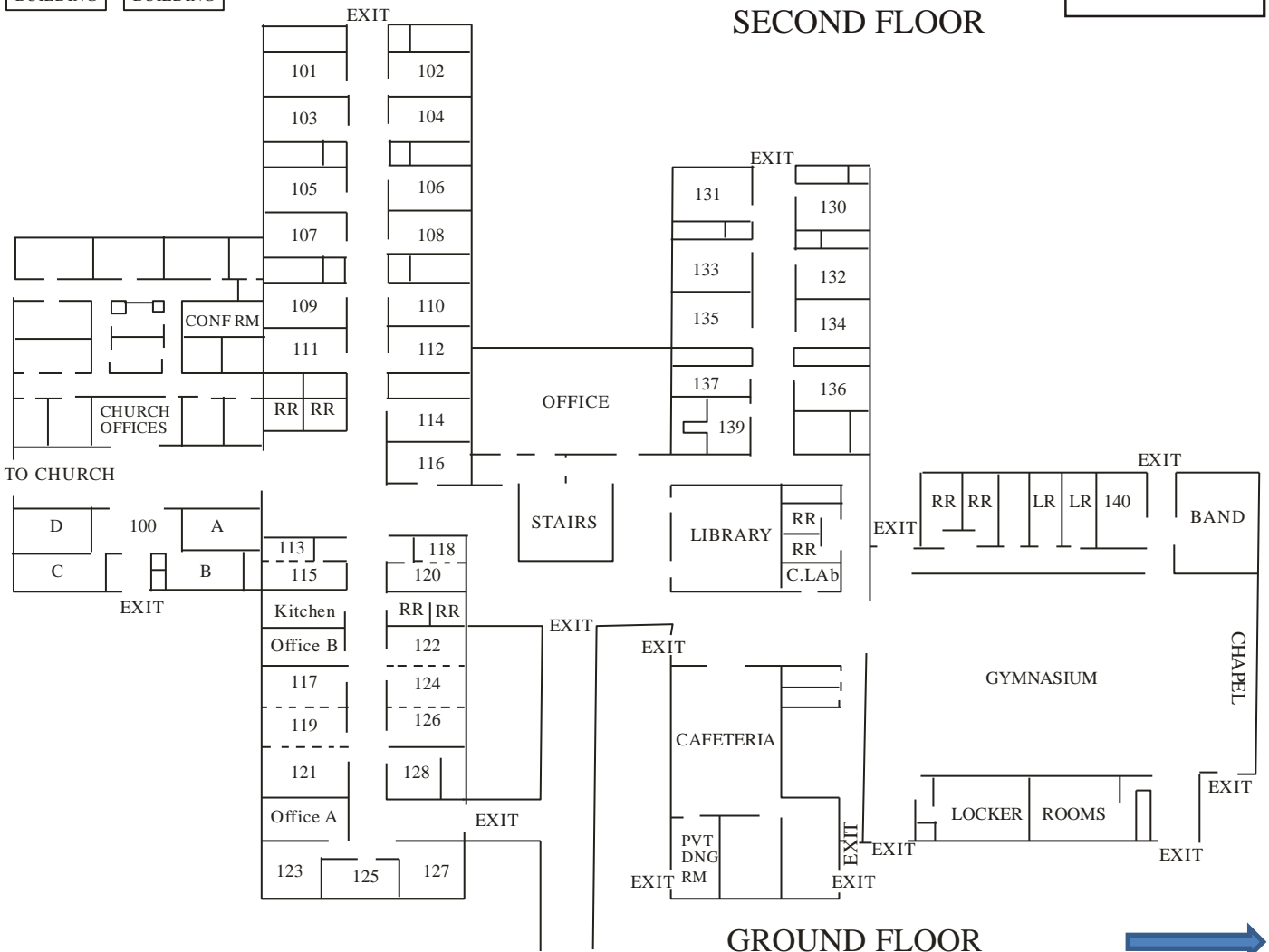


Northpoint Christian School  
Southaven, MS

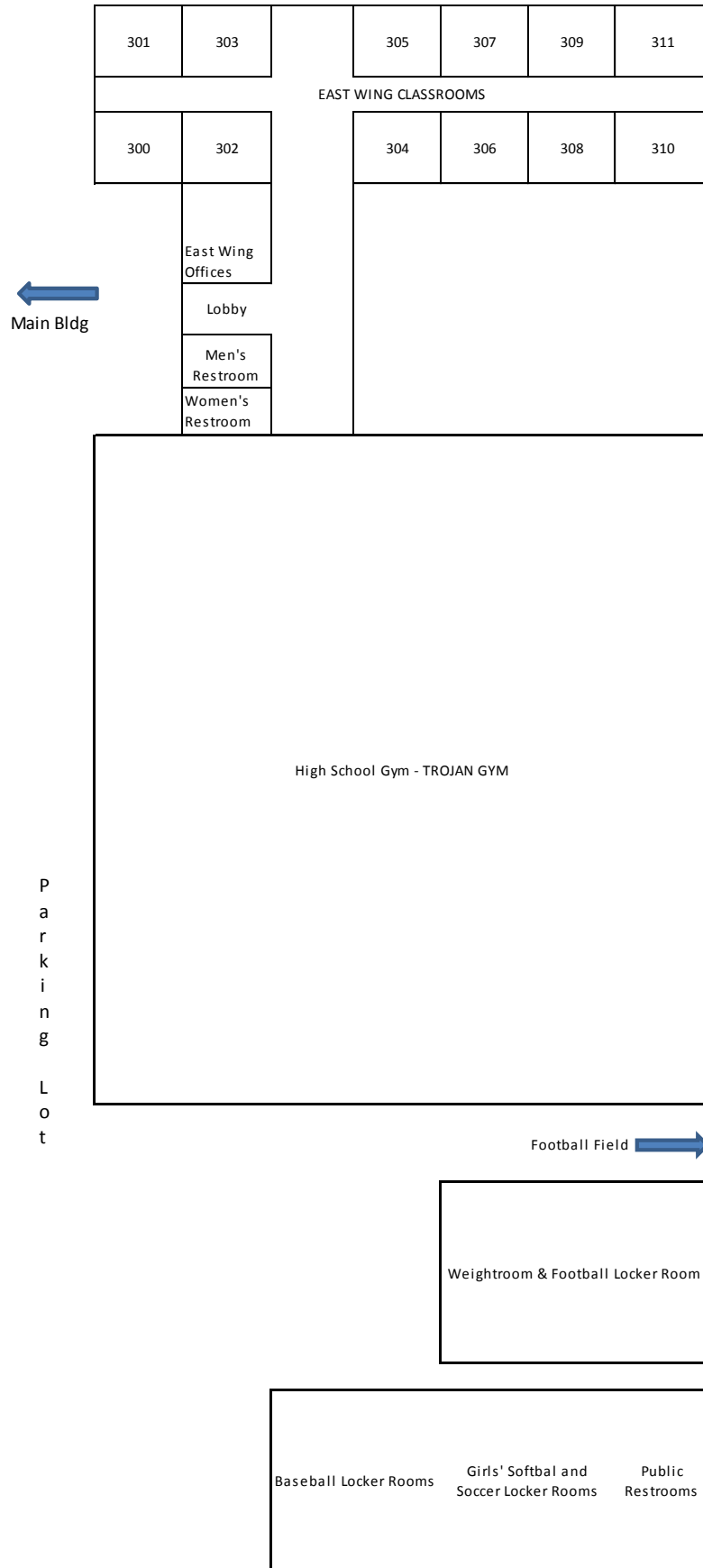


PORTABLE BUILDING

PORTABLE BUILDING



# EAST WING MAP



# EAST WING MAP

GETWELL ROAD

ENTRANCE

Please read and follow the  
Parking Procedures carefully.  
Your Cooperation is Essential!

EXIT



← STUDENT PARKING →

← STUDENT PARKING →

← STUDENT PARKING →

← STUDENT PARKING →

PARK IN SPACES ONLY

← STAFF PARKING →

← STUDENT/STAFF PARKING →

← STUDENT PARKING →

← STUDENT PARKING →

← STAFF PARKING →

NO PARKING  
HANDICAPPED PARKING  
NO PARKING  
NO PARKING  
SIDEWALK

THRU/TRAFFIC  
THRU/TRAFFIC  
PICK UP  
NO PARKING  
PICK UP  
PICK UP

STAFF PARKING

STAFF PARKING

CANOPY

BROADWAY / SBEC

GYM/PAC  
FIRE LANE  
STEPS

HIGH SCHOOL GYM

EAST WING

# PARKING LOT PROCEDURES

## YOUR COOPERATION IS ESSENTIAL

For the safety of your children, PLEASE READ AND FOLLOW these rules concerning the parking lot. It is essential that all parents, students, and any others responsible for picking up or dropping off students adhere to these rules:

- ◆ Cross traffic **ONLY** at the main crosswalk at the center walkway and the crosswalk leading up to the Trojan Hall Gym. **NO ONE SHOULD CROSS TRAFFIC IN ANY AREA OTHER THAN THOSE TWO CROSSWALKS.** Always stop when children are in the crosswalk.
- ◆ Loading or unloading passengers should occur only in the three lanes closest to the building or from a designated parking space.
- ◆ There is one entrance (south drive only) and one exit (north drive only) to be used at all hours. There is a one-way traffic flow on the perimeter.
- ◆ **Refrain from cell phone use when loading or unloading passengers.**
- ◆ Refrain from parking in any numbered spaces as those spaces are specifically assigned to individual students and students are disciplined for their failure to park in their assigned parking space.
- ◆ Do not wait in the lanes between the parking spaces. When waiting for students, use the center drop-off lanes only.
- ◆ No stopping or parking west of the crosswalk at any time.
- ◆ If you must come into the building or exit your car, you **MUST** be in a designated parking place. Preschool and childcare may use the visitor spaces for drop off or pick up. **DO NOT PARK IN THE TRAFFIC LANES.**
- ◆ Obey faculty/staff on duty at all times.
- ◆ Maximum speed on the school campus is 15 miles per hour.
- ◆ Do not park in the handicap spaces without the proper documentation as these spaces are handicap spaces 24 hours a day.
- ◆ Refrain from parking in the marked fire lanes.
- ◆ No pick up or drop off around the church building.

**THANK YOU IN ADVANCE FOR YOUR COOPERATION.**

Visit [www.ncstrojans.com](http://www.ncstrojans.com) to know what is going on at Northpoint Christian School.

Our website has:

- School calendar
- Daily announcements
- In Touch-our weekly newsletter
- Sports schedule
- Lunch menu
- News Articles
- And more.....

---

## Uniforms

### **Dennis Uniform (LaRose)**

7846 Trinity Road, Suite 111

Cordova, TN 38018

901-522-6652

[www.dennisuniform.com](http://www.dennisuniform.com)

**School Code MTNPCS**

Driving Directions:

I-40 east

Exit 14-Whitten Road

Turn right (south) onto Whitten Rd

Turn Left onto Mullins Station Rd

Continue on Raleigh LaGrange which becomes Trinity.

Dennis is on the left.



# School Directory by Department ~ Administration and Staff

## **Admissions 662-349-5127**

Sheila Sheron – Director of Admissions – [[ssheron@ncstrojans.com](mailto:ssheron@ncstrojans.com)]

## **Computer Department/PowerSchool 662-349- 5087**

Scott Young – Director of Technology – [[syoung@ncstrojans.com](mailto:syoung@ncstrojans.com)]

Susan Waters – Assistant Director of Technology – [[swaters@ncstrojans.com](mailto:swaters@ncstrojans.com)]

Jennifer Strunk – Elementary Technology Integrator – [[jstrunk@ncstrojans.com](mailto:jstrunk@ncstrojans.com)]

Jamie Lee – Technology Support [[jlee@ncstrojans.com](mailto:jlee@ncstrojans.com)]

## **Development Office 662-349-5123**

Lynn Fox – Director of Development – [[lfox@ncstrojans.com](mailto:lfox@ncstrojans.com)]

## **Elementary Athletics/Intramurals 662-349-5104**

Lynn Fox – Elementary Athletic Director – [[lfox@ncstrojans.com](mailto:lfox@ncstrojans.com)]

## **Elementary Office 662-349-5092**

Allison Moffett – Elementary Principal – [[amoffett@ncstrojans.com](mailto:amoffett@ncstrojans.com)]

David Fox – Elementary Administrator – [[dfox@ncstrojans.com](mailto:dfox@ncstrojans.com)]

Mary Bennett – Elementary Administrative Assistant – [[mbennett@ncstrojans.com](mailto:mbennett@ncstrojans.com)]

## **Elementary Sports Hotline 662-349-4961 ext. 420**

## **Enrichment Office 662-349-5030**

Pre-K through Sr. K

Before and After School Care Jr. K-6th

## **Finance/Tuition Department 662-349-5080**

Ann Barton - [[abarton@ncstrojans.com](mailto:abarton@ncstrojans.com)]

Elizabeth Jenkins – [[esjenkins@ncstrojans.com](mailto:esjenkins@ncstrojans.com)]

## **Guidance**

Rhonda Whiting – Elementary (K-8) 662-349-5106 – [[rwhiting@ncstrojans.com](mailto:rwhiting@ncstrojans.com)]

Mark Laster – High School (9-12) 662-349-5006 – [[mlaster@ncstrojans.com](mailto:mlaster@ncstrojans.com)]

April Dye - College Guidance - [[adye@ncstrojans.com](mailto:adye@ncstrojans.com)]

## **High School Office 662-349-5073**

Sam Wrigley – High School Principal – [[swrigley@ncstrojans.com](mailto:swrigley@ncstrojans.com)]

Robert Belue – High School Assistant Principal – [[rbelue@ncstrojans.com](mailto:rbelue@ncstrojans.com)]

LeEtta Mahony – High School Administrative Assistant-Main Office – [[lmahony@ncstrojans.com](mailto:lmahony@ncstrojans.com)]

Debbie Callicutt – High School Administrative Assistant-East Wing – [[dcallicutt@ncstrojans.com](mailto:dcallicutt@ncstrojans.com)]

## **Marketing and Communications 662-349-5129**

Lisa Biglane – Director of Marketing and Communications – [[lbiglane@ncstrojans.com](mailto:lbiglane@ncstrojans.com)]

**Nurse 662-349-5128 - Mitzi Phillips** - [[mphillips@ncstrojans.com](mailto:mphillips@ncstrojans.com)]

## **President's Office 662-349-5068**

David Manley – President – [[dmanley@ncstrojans.com](mailto:dmanley@ncstrojans.com)]

Jim Ferguson – Vice President – [[jferguson@ncstrojans.com](mailto:jferguson@ncstrojans.com)]

Amy Darby – Administrative Assistant– [[adarby@ncstrojans.com](mailto:adarby@ncstrojans.com)]

# Northpoint Christian School History

On April 12, 1972, ten Southern Baptist churches (Boulevard, Broadway, Graceland, Havenview, Hickory Hills, LaBelle Haven, LaBelle Place, Trinity, Westhaven, and Whitehaven) met at a local restaurant to discuss a vision for a Christian school in the Whitehaven, Tennessee, community. An organizational meeting was held, and a Christian school, later to be named Southern Baptist Educational Center, was conceived. Serious discussions ensued, and later in 1972 thirty-six acres at the corner of Holmes and Tulane in Memphis, Tennessee were purchased for the site of the school. A corporate charter was granted to the churches on June 27, 1972.

The dream became a reality on April 1, 1973; groundbreaking ceremonies were conducted on the site. Mr. Frank Reput was chosen as the architect. Construction was set to begin on May 1, 1973. Plans were made for the school (grades 1-12) to open in the fall of 1973. For the interim it was projected that the elementary students would use Broadway Baptist Church's facilities and that the high school would use the facilities at Graceland Baptist Church. Mr. Royce Agerter was the first headmaster at SBEC, where there were 780 students and a staff of thirty-two.

---

## **SBEC Groundbreaking Ceremony - 1973**

We dedicate these buildings to the promotion of righteousness for the Godly teaching and guidance of youth, for the cause of religious liberty, for the renewed emphasis of the importance of God being central in the relationship for the home and all meaningful education and that our sons and daughters may learn that the most important lesson they will ever learn is to look to God for guidance and purpose in every decision to be made.

Southern Baptist Educational Center  
April 1, 1973

---

The much anticipated dedication services were held on March 18, 1974, and the elementary and high school united in the new facilities. The first graduating class of 1974 consisted of twenty-four students. As the school continued to grow, it quickly faced not only a financial crisis, but also a philosophical and leadership crisis as well. In November of 1978, Broadway Baptist Church stepped forward and assumed total responsibility for the school and has been the school's sole sponsor since that time. In 1979 Paul E. Young was appointed headmaster, and along with Dr. Bobby Moore, pastor of Broadway Baptist Church, was responsible for the establishment and development of the Christian philosophy to which the school currently adheres. The Southern Association of Colleges and Schools accredited SBEC in 1982.

During the early 1980's the community where the school was located was undergoing significant change. The area was losing professionals as well as families who could afford to send their children to SBEC. As the enrollment began to drop, the decision was made to look for property in Desoto County. SBEC's current site was purchased in 1986, and the former facility was sold to the Memphis City School system. The Memphis Board of Education gave SBEC a million dollars in advance and allowed the school to continue to use the building for two years rent-free while the current facility was under construction.

This facility is located on 63 spacious acres that it shares with Broadway Baptist Church at 7400 Getwell Road, Southaven, Mississippi, in Desoto County. The new school opened its doors in September 1988 with 600 students. For the last thirty years SBEC has grown in size and scope and serves an average of 1,100 students in grades K-3 through 12. The Board of Trustees is the governing body, and Pastor Tim Lampley holds a permanent seat on that board. SBEC is a member of Tennessee Secondary School Athletic Association (TSSAA), Memphis Association of Independent Schools (MAIS), Association of

Christian Schools International (ACSI), and Tennessee Association of Independent Schools (TAIS), and has dual accreditation from the Southern Association of Independent Schools (SAIS) and the Southern Association of Colleges and Schools (SACS). SBEC competes with thirty athletic teams in the high school and eleven teams in the elementary school. The Fine Arts Department features band, chorus, art, and drama. The academic program meets the needs of all students with both a college preparatory track and a program dedicated to students with learning disabilities. The student population is diverse without regard to race, color, creed, sex, ethnic or national origin.

Since 2004, the campus has expanded, adding lighted tennis courts as a result of the generosity of the Homer Skelton Foundation together with a band suite, and an academic facility with 12 classrooms. The dedication of the new wing was held in January, 2006.



The latest building project, a high school gymnasium, was officially dedicated on February 7, 2008. The high school gym has side-by-side full court practice space, both girls' and boys' weight rooms, and a turf room for inside practice sessions.

SBEC celebrated its fortieth anniversary in 2013, and the school remains true to its mission, which is to equip the next generation by assisting the home and church in pursuit of a Christ-centered world and life view, achieved through the highest quality, Biblically-based academic and co-academic instruction. In August, 2013 the name was changed to NORTHPOINT CHRISTIAN SCHOOL.

## Trojan-isms and Important Information for New Families

A.C.T.	Accent on Creative Thinking is designed to provide challenging learning experiences for the academically talented child in a highly motivational, creative setting beyond the regular classroom. Based on specific criteria, students in grades 2-5 are selected to participate in the program. An additional participation fee is required.
After Care	Fee-based supervised childcare provided by Enrichment Center for elementary students after school care, until 6:00 p.m. (All elementary students on campus after 3:30 p.m. are required to be under the direct supervision of an adult or teacher.) Please call enrichment Center at 662.349.5030 or check on the website for exact cost and hours. School start time is 8:15 and ending time is 3:15 for elementary and 3:20 for high school, except on Wednesdays which is 2:40 and 2:45 respectively.
AR Lab	Accelerated Reader Lab. Located in Trojan Hall. See Accelerated Reader above.
Bag to School	At the end of the school year, parents have the option to pre-order school supplies for their child for the next school year. The school supplies will be placed in the elementary classroom on the first day of school in grades pre-kindergarten through 6th grades. Supplies are also available for high school students beginning at high school registration.
Before Care	Fee-based supervised childcare provided by Northpoint Christian School for elementary students who arrive between 7:00 and 7:45 a.m. All elementary students on campus between 7:00 and 7:45 will report to the Trojan Hall gym or cafeteria. Please call NCS Enrichment Center at 662.349.5030 for exact costs and hours.
Book Fairs	Our annual Elementary Book Fair provides great values on book purchases. Books are available for the whole family. Fair is located in the Elementary Library in November. High School library also has a Book Fair in April or May. High School required reading books are available for purchase during this event.
Booster Clubs	Booster Clubs are support groups for specific activities that are sponsored by the school. Current booster clubs that exist are band, drama, and athletic.
Box Tops for Education	The school collects Box Tops from General Mills products. Box Tops are redeemed for cash for the school. Please see the school's website – Partner Programs – for a list of “box tops” that help us earn cash! Collection bins are placed in the lobby, just outside the elementary office. Prizes are awarded for top class collectors.
Broadway	“Broadway” is Broadway Baptist Church, which his directly adjacent to the school. Their website is <a href="http://www.broadwaychurch.org">www.broadwaychurch.org</a> .
Chapel	Chapel for Sr. K – 6th grade is a weekly, thirty minute program that highlights missions and provides opportunities for classes to perform. Chapel programs are held in the Performing Arts Center (PAC). High school chapel programs are held in the Broadway Sanctuary or PAC and involved faculty and community speakers. See map for location.
Church Office	Church office refers to the Broadway Church administrative area. See map for location.
Computer Lab	Elementary: The computer lab is used for computer classes, AR testing and After Care students. For Elementary, the computer lab is in Trojan Hall. High School: The computer lab is used for research, AR testing and homework help. Lab is adjacent to the upstairs/High School library. See map.
Computer Password for High School Students	A computer use form must be completed, signed by parents and students, and returned to the computer department. A required password to access school computers will be issued. Contact Scott Young or Susan Waters if you have any questions. 662.349.5087.
Dennis Uniforms	Company from which all uniforms are purchased. See <a href="http://www.dennisuniform.com">www.dennisuniform.com</a> for more information. Our School code is MTSBEC.
Early Check Out	Elementary check out is done through the Elementary Office located on the left or west side of staircase in the main lobby. High School check out is handled through the High School Office located on the right side of the stairs. Go to the sliding glass window.
East Wing	The new education building on the eastern side of the campus, housing twelve high school classrooms and some high school administration offices, including the Assistant High School Principal's office and the High School Guidance Counselor.

Elementary Library	Elementary library is the downstairs library area. Students go to the library as a class once a week.
Fellowship Hall	Located in the church building, outside of sanctuary. See map for location. Used occasionally by the school for various events.
Field Day	Fun class/grade competition for the elementary students, held in late spring at the football field.
Guidance Counselors	Grades 9-12: Mark Laster – mlaster@ncstrojans.com Grades 1-8: Rhonda Whiting – rwhiting@ncstrojans.com
High School Computer Lab	The lab is adjacent to the high school library, which is on the second floor of the main building. See Computer Lab above.
High School Library	The high school library is located on the second floor directly above the elementary library.
Homecoming Activities	A fun week during the fall, concluding with the homecoming football game and crowning of the homecoming queen. The junior and senior high students are dismissed early one day to decorate and make class posters. On Friday the entire school goes outside at approximately 8:20 a.m. to watch the Seniors arrive. There is a pep rally at 1:30 p.m. on Friday, attended by 4th-12th grades. One of the most highly anticipated homecoming activities is the “Guy cheerleaders” from 7th-12th grades.
In Touch	An e-newsletter that is published every Wednesday. It is a consistent communications tool for timely information and announcements. All families are signed up to receive the newsletter via email. You can also view the newsletter at <a href="http://www.ncstrojans.com">www.ncstrojans.com</a> and click on Communications, and then click on In Touch newsletter.
Jeans Day	Occasionally, the students will be given the opportunity to wear jeans by donation to a student group for a missions or other worthwhile project. Only “spirit wear” t-shirts or dress code shirts are allowed to be worn with the jeans. In addition, jeans day can be an incentive for fundraising activities. Jeans worn on Jeans Day must be dress code compliant, with no holes or fraying. T-shirts are occasionally available to purchase in the main lobby and at high school football games.
Kroger Plus Card	The highly successful participation program offered by Kroger. Every family is encouraged to register for Northpoint Christian School and use their Kroger Plus Card. You and Northpoint Christian School benefit from this program. You still receive your points and Northpoint Christian School receives a percentage of the grocery amount purchased. More information and instructions are located on our website under Support Us/Partner Programs, then scroll down to Kroger. <b>Parents must re-enroll with Kroger each year to continue funds directed to NCS.</b>
Lunch Debit Account	Every student will receive a lunch account. The lunch accounts can be preloaded with a check for students to use for lunch money purposes. Checks are to be made out to MMI Dining. Payments can also be made online at <a href="http://www.mealpayplus.com">www.mealpayplus.com</a> .
Lunch Room Policies	Each class has an assigned lunch time. Students arrive and depart at the same time, as a class. Parents are welcome to eat lunch with their child on most days. Parents should sign in at security desk in the main school lobby to receive a visitor pass.
MMI Dining	Company that operates the school lunch services.
Modular Buildings	Portable buildings located near the elementary playground. M2-Consignment Sale, M3- Science Lab, M4 – ACT class
Nurse	Mitzi Phillips or a registered nurse is on the campus during school hours. She is able to dispense prescription medication to your child if it is in the original prescription container. Direct number is 662.349.5128. Medical forms are available on the website under Campus Life/School Nurse.
PAC	Performing Arts Center located on the east side of the Trojan Hall gym. See map.
Parking Lot	Please see parking lot map and procedures. Students and staff have mandatory assigned parking places.
Partner Programs	Approved vendor programs. Your participation financially benefits our school. See school website for details.
Password (Computer) for Students	A “Computer Use Form” must be completed, signed by parent and student, and returned to the computer department. At that time, new junior and senior high students will receive a computer password. Please contact Susan Waters at <a href="mailto:swaters@ncstrojans.com">swaters@ncstrojans.com</a> if you have any questions.
Pledges	Each morning at 8:15 a.m., high school students begin the day’s activities by leading the entire school in the Pledge to the American flag and the Christian flag, followed by a Bible verse and prayer.
Pop Tops	The pop tops from aluminum cans are collected and sold to generate funds for St. Jude Children’s Research Hospital. A collection bin is located in the lobby, just in front of the elementary offices.

PowerSchool Parent Portal	On line system for viewing students' grades, assignments and class information for 5 <sup>th</sup> – 12 <sup>th</sup> grades. Each student and parent is assigned an access code. Please contact the Northpoint Christian School information technology department if you have questions.
Preschool Department and Child Care	Our Preschool is the area for Pre, Junior, and Senior Kindergarten. See map for location. Childcare is covered by the Preschool Department. See school website for hours and days of operation, along with the cost.
PTSF	Parent Teacher Student Fellowship.
REACH	Reaching Educational Achievement Through Christian Help (REACH) is for students who have been diagnosed with a learning disability through a licensed psychologist. The REACH program seeks to develop the student to their highest potential spiritually, intellectually, emotionally, and physically. Northpoint Christian School provides the best educational setting for the student by individualized, small group, or various methods of teaching, and consistently communicates with the home through written grade reports and phone calls.
School Starting and Ending Times	The hallways are open at 8:05 a.m. and the tardy bell rings at 8:15 a.m. School ends at 3:00 pm for students in PK, JK, SK, 1 <sup>st</sup> and 2 <sup>nd</sup> grades, 3:15 p.m. for 3 <sup>rd</sup> – 6 <sup>th</sup> grade students and 3:20 p.m. for 7 <sup>th</sup> – 12 <sup>th</sup> grades. The dismissal time on Wednesdays is 2:30 for PK, JK, SK, 1 <sup>st</sup> and 2 <sup>nd</sup> grades, 2:40 p.m. for elementary and 2:45 p.m. for high school. On half days, school ends at 11:30 am for PK, JK, SK, 1 <sup>st</sup> , and 2 <sup>nd</sup> grades, 11:40 a.m. for 3 <sup>rd</sup> – 6 <sup>th</sup> grades, and 11:45 a.m. for 7 <sup>th</sup> – 12 <sup>th</sup> ..
School Supplies	Lists are available on our website site under Academics/ 7 <sup>th</sup> – 12 <sup>th</sup> grade/Supply Lists and Academics/PK--6 <sup>th</sup> /PK-6 <sup>th</sup> Supply Lists. Lists vary by grade. For last minute needs, there is a bookstore cart in the lobby each morning with a variety of supplies available for purchase.
See You at the Pole	Northpoint Christian School participates in the national <i>See You at the Pole</i> day. <i>See You at the Pole</i> is a student initiated, student organized, and student led event. That means this is all about the students meeting at their school flagpole to pray – for their school, friends, teachers, government, and nation. <i>See You at the Pole</i> is not a demonstration, a political rally, or a stand for or against anything. <i>See You at the Pole</i> is scheduled annually on the fourth Wednesday in September.
Spirit Wear	Spirit Wear is school-approved t-shirts, sweatshirts, and jackets. The spirit wear t-shirts and sweatshirts may be allowed on “jeans days.” Look for purchase opportunities at football games and in the In Touch e-newsletter.
Spiritual Emphasis Week	For high school students. This takes place in the fall.
Sports	For High School Athletics: Contact the Head Coach of your particular sport. For Elementary Athletics: Lynn Fox, Elementary Athletic Director – lfox@ncstrojans.com or 662.349.5123.
Student Clubs	Elective learning groups for grades 7-12.
Student Council	Campaigns and elections are held in the spring to elect leadership positions for the following school year in the high school and junior high school.
Student Directory	The Student and Family Directory is sent to the School Communication Email Address for each student in the fall. The information is provided by the parents while completing the online Contract of Enrollment. If the information was not included at that time, the student will not be included in the Student Directory.
Student Handbook	<b>Be sure to thoroughly review the handbook.</b> Many of your questions will be answered through a careful reading of this valuable tool. There is a separate handbook for elementary and high school. These handbooks are on the website under “Academics” or on the “Parents” page.
Theatre Department	The school generally offers a drama conservatory in the fall for elementary students and fall drama and spring musical for high school students. Look for details about tryouts and performance dates on the school website and in the IN TOUCH weekly e-newsletter. Judy DeFrehn is the faculty sponsor. Contact her at jdefrehn@ncstrojans.com.
Trojan Hall	The hall/concession stand area located between Trojan Hall gym and the main lobby. Concessions are normally open on Tuesdays and Thursdays.
Trojan Text	Trojan Text is an OPT IN way to receive communications from the school. To join, please text keyword <i>ncstrojans</i> (all lower case, no spaces) to 955-77. You will receive a notice that you have joined the Northpoint Christian School Trojan Text network and your phone number will be included in future alerts, updates, and information. Please be sure that you can receive these texts. Standard text rates will apply.

Uniforms	The school adheres to school uniform code for grades 1-12. <a href="http://www.dennisuniform.com">www.dennisuniform.com</a> . See handbook for details. Watch website for Consignment Sale of used uniform.
Website	<a href="http://www.ncstrojans.com">www.ncstrojans.com</a> .
Wednesday Folders	Wednesday Folders are a valuable communication tool used in grades 1-6. Graded papers, announcements, field trip information, teacher newsletters, etc., are found in the folders. <b>Please read the information each Wednesday.</b>
Yearbook	The yearbook will be published and distributed at the end of the school year, but orders must be placed in the fall. Many parents of senior students buy an ad page in which they feature messages and pictures to honor their graduating student.

## New Family Checklist

- ❑ **Obtain a school supply list online.** Go to [www.ncstrojans.com](http://www.ncstrojans.com) and click Academics/PK-6/PK-6 Supply List or Academics/7<sup>th</sup>-12/Supply List to print out the supply list. Purchase supplies at area stores, or participate in the BAG TO SCHOOL program, which is available for sign up in May for grades PreK-6th.
- ❑ **Purchase your school uniforms.** Go to [www.dennisarose.com](http://www.dennisarose.com) or visit the store in the Memphis area. Also refer to the DRESS CODE in the Student Handbook. School code is MTSBEC. There is also a Uniform Consignment Store on campus that is open the third Tuesday of each month from 7:30 am – 9:00 am.
- ❑ **Arrive early on the first day of school.** This will allow the student a little extra time to find their classroom without being rushed.
- ❑ **Review the Parking Lot Map and Procedures in this handbook.** For the safety of our students and for the best possible traffic flow, it is imperative that all parents follow the procedures listed.
- ❑ **Obtain a computer password.** This is for junior high and high school students. Complete the “Computer Use Form” from the computer department to obtain a student computer password.
- ❑ **Familiarize yourself with PowerSchool.** This program is used for grades 1st-12th. See the school website for this service, which allows parents to view grades and communicate with the teachers. You will be issued a code to allow you to view your child’s grades online each week. Also we will have information for each teacher via PowerSchool from PK-12<sup>th</sup> grades.
- ❑ **Review the Student Handbook carefully.** The handbook is online at [www.ncstrojans.com](http://www.ncstrojans.com). Click on Student Life, and then choose either the Elementary Handbook or the High School Handbook from the navigation bar. Grades 7-9 (Jr. High) will follow the High School Handbook.
- ❑ **Open an account for the cafeteria.** Money can be placed in a debit account to be used to purchase school lunches. Make checks payable to MMI Dining. Information from MMI will be sent home at the beginning of the school year. The cafeteria phone number is 662.349.5052.
- ❑ **Cover Student text books.** Students will be asked to cover their textbooks. The type of book cover requested may vary by grade and teacher.
- ❑ **Check out PTSF.** All Northpoint Christian School families are automatically members of PTSF. Contact Lisa Biglane at 662.349.5129 or [lbiglane@ncstrojans.com](mailto:lbiglane@ncstrojans.com) for questions on how to get involved with the PTSF.
- ❑ **Mark your calendar.** Record on your calendar various parent night, student tours, etc.. Important information will be shared at these events and many of your questions will be answered.
- ❑ **Help your student memorize the pledges if they do not know them.** Pledge to the Christian flag: *I pledge allegiance to the Christian flag, and to the Savior for whose kingdom it stands. One brotherhood, uniting all Christians in service and in love.* Pledge to the Bible (elementary students only): *I pledge allegiance to the Bible, God’s Holy Word. May I make it a lamp unto my feet and a light unto my path, and hide its words in my heart that I might not sin against God.*



For suggestions, comments or questions  
regarding this handbook, please contact:

Lisa Biglane  
Director of Marketing and Communications  
662.349.5129  
[lbiglane@ncstrojans.com](mailto:lbiglane@ncstrojans.com)